



SONSU Controls Inc.

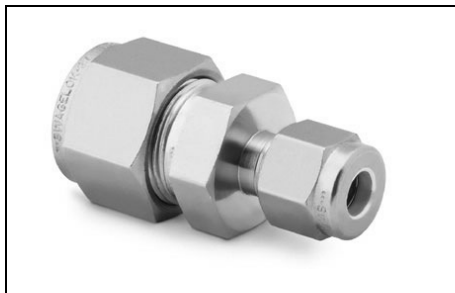
Ontario, Canada, Texas USA Tel: 647-207-3782 / 512-366-3782 Facsimile: 415-962-0648
pberwani@engineer.com - www.sonsucontrols.com - Instrumentation, Controls & Automation.

Special deals – email for pricing!!!



Avlok Three - way valve manifold stainless steel 1/2" NPT 6000psi compare with Swagelok SS-V3NBF8 - qty 50 stock

two block valves and an equalizer valve, 1/2" FNPT, 2-18" (54mm) port centerline centres for safety bonnet lock pin standard, 100% pressure tested, 6000psi rated, TFE packing



Swagelok SS-810-6-4 Tube Fitting, Reducing Union, 1/2 in. x 1/4 in Tube OD - qty 30 stock

See complete catalog for datasheets, refer to Hyperlink



Gyrolok® Tube Fittings

- Hoke Gyrolok 4LU-316 – qty 100
- Hoke Gyrolok 6CF4-316 – 5 pcs
- Hoke Gyrolok 4CP-316 – 2 pcs

See complete catalog for datasheets, refer to Hyperlink – all stock



Swagelok SS-4F-K4-15 - qty 80 stock

15 Micron Element Kit for 4F, 2TF and 4TF Series Particulate Filters

Body Material	316 Stainless Steel
Cleaning Process	Standard Cleaning and Packaging (SC-10)
Feature	15 Micron Element Pore Size



SONSU Controls Inc.

Ontario, Canada, Texas USA Tel: 647-207-3782/512-366-3782 Facsimile: 415-962-0648
pherwani@engineer.com - www.sonsucontrols.com - Instrumentation, Controls & Automation.

Special deals – email for pricing!!!

DRESSER Masoneilan

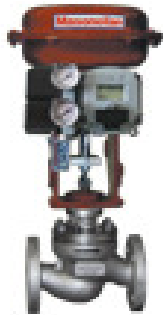


Spares below – all stock at our Muscat Oman warehouse. Please write for special pricing

Model # 87-41315/HW SIZE 3", CLASS 300
PLUG **PART # : 400117-674-215**
QTY : 2 each

Model # 87-41935/HW SIZE 6", CLASS 300
CAGE **PART # : 400119-027-193**
QTY : 22 each

Model # 87-41325/HW SIZE 10", CLASS 150
PLUG STEM **PART # : 010868-314-215**
QTY : 20 each



Model # 88-21115 SIZE 1", CLASS 300
PLUG **PART # : 021000-282-163**
QTY : 9 each

Model # 88-21125 SIZE 3", CLASS 150
PLUG STEM **PART # : 010868-301-163**
QTY : 30 each

Model # 88-21115 SIZE 1", CLASS 300
PLUG **PART # : 021003-298-587**
QTY : 4 each